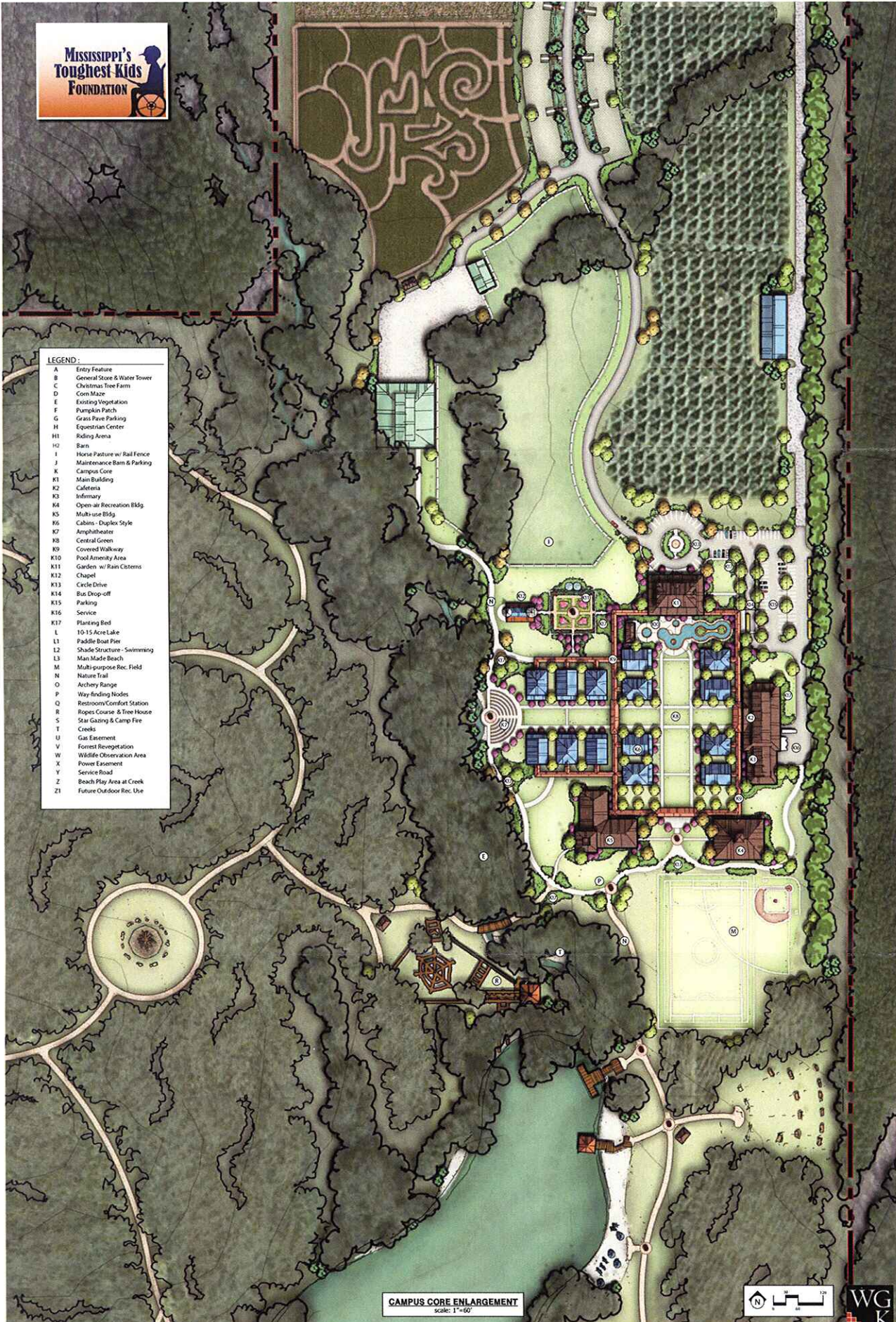




- LEGEND:**
- A Entry Feature
  - B General Store & Water Tower
  - C Christmas Tree Farm
  - D Corn Maze
  - E Existing Vegetation
  - F Pumpkin Patch
  - G Grass Pave Parking
  - H Equestrian Center
  - H1 Riding Arena
  - H2 Barn
  - I Horse Pasture w/ Rail Fence
  - J Maintenance Barn & Parking
  - K Campus Core
  - K1 Main Building
  - K2 Cafeteria
  - K3 Infirmary
  - K4 Open-air Recreation Bldg
  - K5 Multi-use Bldg
  - K6 Cabins - Duplex Style
  - K7 Amphitheater
  - K8 Central Green
  - K9 Covered Walkway
  - K10 Food Amenity Area
  - K11 Garden w/ Rain Cisterns
  - K12 Chapel
  - K13 Circle Drive
  - K14 Bus Drop-off
  - K15 Parking
  - K16 Service
  - K17 Planting Bed
  - L 10-15 Acre Lake
  - L1 Paddle Boat Pier
  - L2 Shade Structure - Swimming
  - L3 Man Made Beach
  - M Multi-purpose Rec. Field
  - N Nature Trail
  - O Archery Range
  - P Way-finding Nodes
  - Q Restrooms/Conifer Station
  - R Riggs Course & Tree House
  - S Star Gazing & Camp Fire
  - T Creeks
  - U Gas Easement
  - V Forest Revegetation
  - W Wildlife Observation Area
  - X Power Easement
  - Y Service Road
  - Z Beach Play Area at Creek
  - Z1 Future Outdoor Rec. Use



**CAMPUS CORE ENLARGEMENT**  
scale: 1"=60'





The sole mission of Mississippi's Toughest Kids Foundation is to build and maintain a year round, totally accessible camp facility used by children and adults with serious illnesses and/or physical and mental life challenges. Now these groups are leasing a place to hold camp—let's give them a place just their own. **Do you know someone who needs this camp?**



**Katelyn and Demi are great friends who met at Camp Rainbow, a camp for children with cancer.**

**MISSISSIPPI'S TOUGHEST KIDS FOUNDATION**

**HOW YOU CAN HELP:**

- Regularly pray for us as we seek God's guidance in all things.
- Invite us to speak to your company, social group, civic club, church, etc.
- Sponsor a fundraiser.
- Give generously to support this camp facility. Donations can be made in memory or honor of someone or just sent to MTK as a gift. Within days you (and they) will receive a letter of acknowledgement and appreciation.



**Mrs. Jim (Mary) Kitchens, Director**  
 601-892-1117 (office) 601-750-3457 (cell)  
 P.O. Box 520, 123 S. Georgetown St.  
 Crystal Springs, MS 39059  
[mstoughkids@yahoo.com](mailto:mstoughkids@yahoo.com)  
 MTK Foundation is an Internal Revenue Service Code Section 501(c)(3).  
[mtkfound.com](http://mtkfound.com)

**Please "Like" us on Facebook**



**Building a camp facility on 326 acres in NW Copiah County for children and adults with special needs...**

*"Make level paths for your feet,  
 so that the lame may not be disabled, but rather healed."*

Hebrews 12:13